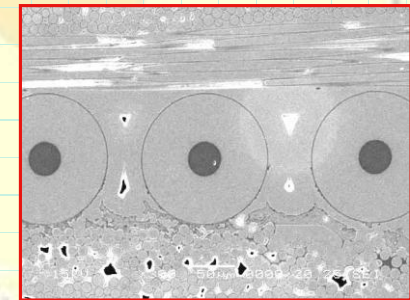
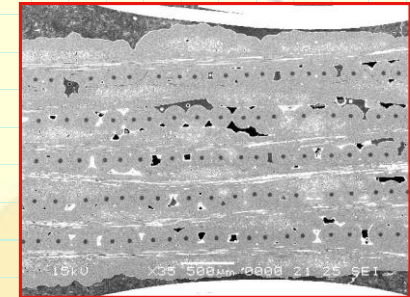
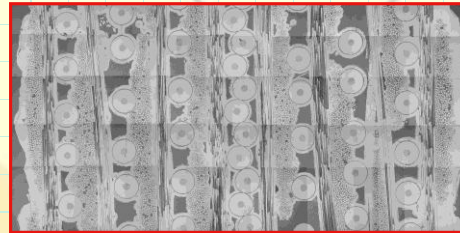


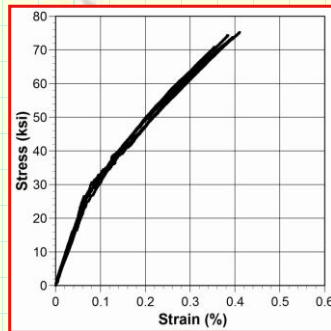
Microstructures

SCS-Ultra+Sylramic iBN/CVI SiC Composites

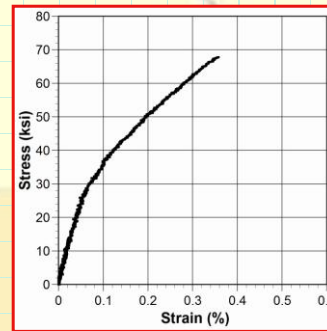


As-Fabricated Tensile Properties

0° SCS-Ultra+ 0°/ 90° Sylramic iBN/CVI SiC



Lower areal wt standard SCS-Ultra:
vf0 =Sylramic iBN=12% + SCS-Ultra=15%
vf90=Sylramic iBN=12%



Higher areal wt "single-pass" SCS-Ultra:
vf0 =Sylramic iBN=11% + SCS-Ultra=16%
vf90=Sylramic iBN=11%

Initial Hyper-Therm* Fabrication & Testing Results of Hybrid Fiber CMC Specimens Show ~ 27 ksi Proportional Limit

*

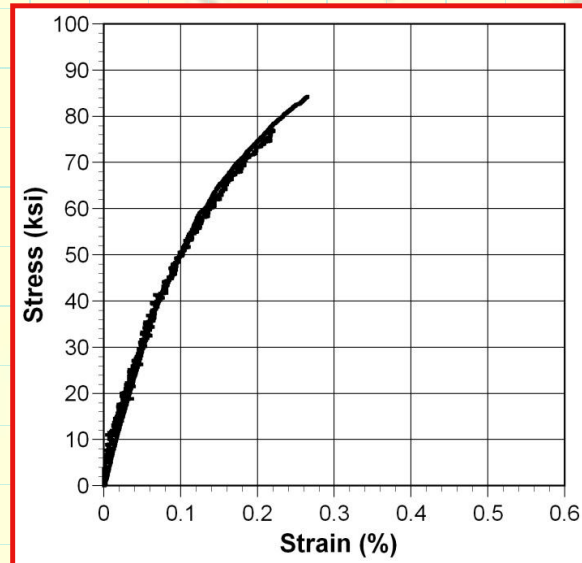
**SiC/SiC Composites
with SCS-Ultra for 2700°F+ Service**

R.J. Shinavski*
Hyper-Therm HTC
Huntington Beach, CA
714-375-4085

robert.shinavski@htcomposites.com

As-Fabricated Tensile Properties

0/+/-10° SCS-Ultra/CVI SiC



Ultimate Strength	80.6+/-5.2 ksi
Failure Strain	0.239+/-0.038%
Elastic Modulus	57.8+/-1.3 Msi
P.L. Strength	41.8+/-1.4 ksi

**Near-unidirectional SCS-Ultra/CVI SiC Has Shown
40+ ksi Proportional Limit Capability**

*

**SiC/SiC Composites
with SCS-Ultra for 2700°F+ Service**

R.J. Shinavski*
Hyper-Therm HTC
Huntington Beach, CA
714-375-4085

robert.shinavski@htcomposites.com